



Kikuti

PLACE OF

Beauty

TREATMENT MENU





LET OUR SOMATOLOGISTS CUSTOMISE A FACIAL SPECIFICALLY FOR YOU

EXUVIANCE RANGE

HYDRATION STATION

60 min R 520

Restores moisture, improves strength and plumpness
For all skin types

ACNE ATTACK

60 min R 520

Clarifying & pore refining
For oily and acne prone skin

AGE REWIND

60 min R 640

Anti-aging facial targeting fine lines, wrinkles, poor texture and loss of firmness
For mature skin

SUPERNATURAL O2

90 min R 680

A triple oxygenating blend delivers an infusion of pure essential oxygen to detoxify and re-energize your skin to restore a youthful, luminous complexion
bionic oxygen facial is an ideal step following an exuviance peel or whenever skin needs a restorative boost of radiance
For all skin types



EXUVIANCE 30% FACIAL PEEL

Clarifying Booster: Targets dark spots, smooths fine lines and wrinkles, helps to improve oily and acne-prone skin
or

Antioxidant Booster: Targets fine lines and wrinkles, helps improve firmness, provides antioxidant defence against photo-ageing free radicals

TREATMENT	DURATION	PRICE PER SESSION	6 SESSIONS PRE-PAID
Face, Neck & Décolleté	45 min	R 550	R 3000
Face Only	30 min	R 400	R 2100

FACIALS & PEELS

RECOMMENDED 4 - 6 TREATMENTS @ 4 WEEK INTERVALS



DERMAPEN MICRONEEDLING

SKIN NEEDLING THERAPY

Dermapen advanced skin needling promotes scarless healing and the deposition of normal woven collagen, similar to fractional laser treatments but without the side effects and downtime. Dermapen is more effective than most microdermabrasion and chemical peels.

Targeting:

- Aged sagging skin
- Pigmentation
- Large pores
- Stretch marks
- Scarring (acne, surgical and burns)
- Fine lines and wrinkles
- Alopecia (when used in conjunction with a topical treatment)
- Skin tightening and rejuvenation
- Smoker's lines around the lips

TREATMENT	DURATION	PRICE PER SESSION	6 SESSIONS PRE-PAID
<i>Face or specific targeted areas on the body (size dependant)</i>	45 min	R 1000	R 5400
<i>Face & Neck</i>	45 min	R 1280	R 6930
<i>Face, Neck & Décolleté</i>	60 min	R 1480	R 8130
<i>Face, Neck, Décolleté & Hands</i>	75 min	R 1680	R 9330

MICROBLADING

Microblading is a form of permanent makeup and is a relatively new technique of enhancing the appearance of eyebrows. Using a hand tool and ultra-thin blade, natural pigment is deposited into the upper dermal layer of the skin, making it semi-permanent for 1-2 years, depending on the skin type and lifestyle. This technique will result in thin and defined hair-strokes.

6D Microblading

Touch up after 6 weeks

R 1800

R 750



REGIMA RANGE

CLEAN AS A WHISTLE

A deep cleansing facial to unblock congested skin, helping to balance hormones within the skin responsible for breakouts
For teenage or adult acne

60 min R 400

YOUNG AND YOUTHFUL

A rejuvenating, hydrating, nourishing treatment with anti-oxidant and anti-aging action. Helps to reverse and prevent the effects of cigarette smoke and carbon monoxide, soothes and calms irritated skin
For dry, dehydrated, sun damaged, aging and wrinkled skin types

45 min R 450

REGIMA PEELS

LIKE A VIRGIN

A "ONCE OFF" introductory peel
For first time Regima clients with very sensitive, dry, dehydrated skins

45 min R 450

A LITTLE R & R - 30% POWER PEEL

A rejuvenating and repairing mask with rapid penetration and minimal down time
For all skin types

60 min R 500

DOUBLE WHAMMY INTENSIVE PEEL

For sun damaged, thick skin and problematic, dry, wrinkled skin.

60-75 min R 800

TAKE ME TO ANOTHER LEVEL - 50% POWER PEEL

A damage repair peel with a deeper penetration, targeting specific skin conditions
For all skin types especially pigmented, sun damaged, wrinkled and aging skin

45 min R 550





BOOK YOUR ERGOLINE SUN DASH VERTICAL SUNBED SESSIONS FOR A SPECTACULAR GLOW ALL YEAR ROUND

VERTICAL SUNBED

1 Session	10 min/Session	R 65
10 Sessions	10 min/Session	R 600

* 10 sessions to be used within 6 weeks

* If the session is not cancelled within 12 hours prior to the appointment the session shall be forfeited



GALVANIC

15 min R 55

Works to improve blood flow and lymphatic drainage in the areas it is applied on this helps the skin cleanse itself naturally and assists with black head relief helps reduce wrinkles, improves hydration and moisture levels, reduces pore size and facial redness, neutralizes impurities and improves skin tone

HIGH FREQUENCY

10 min R 55

Used by skin care professionals to help treat and prevent stubborn acne, shrink enlarged pores, reduce the appearance of fine lines and wrinkles, de-congest puffy eyes, fade dark eye circles

EYE CONTOUR TREATMENT

10 min R 55

Calming, firming and hydrating



BODY BLISS

Swedish Back and Neck	30 min	R 280
Swedish Full Body	60 min	R 450
Aromatherapy	60 min	R 400
Hot Stone Back, Neck and Shoulder	40 min	R 380
Hot Stone Full Body	60 min	R 480
Pre-Natal Head, Neck and Back	30 min	R 280
Indian Head Massage	30 min	R 210
Impurity Back Cleanse and Massage	50 min	R 340
Full Body Exfoliation	75 min	R 680



MORE THAN MEETS THE EYE

Eyelash Tint		R 70
Eyebrow Tint		R 60
Lash and Brow Tint		R 110
Brow Wax and Tint	30 min	R 110
Henna Brows	45 min	R 250

BAT AN EYELASH

Eyelash Extensions Full Set (Volume)	120 min	R 800
Eyelash Extensions	120 min	R 650
Lash Fill after 2 Weeks	60 min	R 420
Lash Fill after 3 Weeks	60-90 min	R 520
Lash Removal	30-45 min	R 180



BIO SCULPTURE, HARMONY ACRYLIC, NELÉ & NSI

ALL HANDS ON DECK

Manicure	60 min	R 250
Male Manicure	60 min	R 220
French Manicure	60 min	R 255
Gelish Manicure	60 min	R 365
Gelish French Manicure	60 min	R 375
Gelish Paint (Prep & Application)	45 min	R 230
Missy Mani (Under 12)	30 min	R 65

HANDY TIPS

Natural or French Tips with Acrylic	75 min	R 350
Natural Acrylic Tips with Gelish Overlay	90 min	R 450
Acrylic Gelish Overlay	75 min	R 380
Acrylic Overlay - Natural	60 min	R 280
Acrylic Overlay - French	75 min	R 300
Gel Overlay - Bio Sculpture or Nelé	60 min	R 300

ON TOP OF THE WORLD

Acrylic or Gel Fill	60 min	R 220
Acrylic Fill with Gelish	75 min	R 300
Acrylic or Gel Fill with Varnish Paint	75 min	R 270

AU NATURALE

Soak Off	30 min	R 50
Soak Off, File, Buff and Paint	60 min	R 180

QUICK FIX

Nail Repair	30 min	R 50
-------------	--------	------

GOTTA HAND IT TO IBX

IBX Natural Nail Treatment X 1	30 min	R 85
IBX Natural Nail Treatment Course X 6	30 min	R 420



GET BACK ON YOUR FEET

Pedicure	60 min	R 250
Spa Pedicure	70 min	R 380
Spa Pedicure with Gelish French	60 min	R 390
Gelish Paint (Prep & Application)	45 min	R 230
French Pedicure	60 min	R 295
Male Pedicure	60 min	R 250
Missy Pedi (Under 12)	30 min	R 75

BEST FOR LAST

Elim Medi Pedi	75 min	R 370
Elim Medi Pedi with Paint	90 min	R 440
Elim Medi Pedi with Gelish	90 min	R 530

GIVE ME MORE!

Nail Sticker Art per nail	15 min	R 10
Paint on Nail Art per nail	30 min	R 20
Varnish or Re-varnish	30 min	R 120
Paraffin Dip	15 min	R 65
Foot or Hand Soak and Exfoliate	30 min	R 175



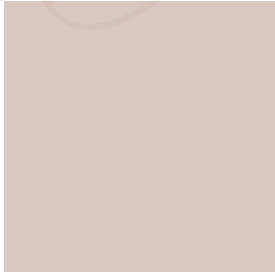
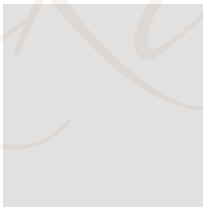
EPILFREE PAIN FREE HAIR REMOVAL

EPILFREE INCLUDING WAX

Safe, Natural & Effective: Epilfree is a Laser / IPL **FREE** hair removal treatment. Enhance your waxing routine with Epilfree and get lasting laser like results. Epilfree is part of a comprehensive treatment which inhibits and slows down re-growth of body and facial hair. There is never a danger of pigmentation before, during or after treatments. A single treatment on a limited area will give visible results within weeks.

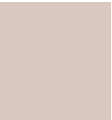
TREATMENT	DURATION	LADIES	GENTS
Full Leg	60 min	R 968	R 1056
Half Leg	45 min	R 660	R 704
Three Quarter Leg	45 min	R 814	R 968
Bikini or Underarm	30 min	R 484	
Brazilian	60 min	R 792	
Full Arm	60 min	R 704	R 792
Half Arm	30 min	R 484	R 528
Stomach	30 min	R 440	R 968
Lip, Brow or Chin	30 min	R 385	
Lip, Brow and Chin	60 min	R 792	
Back, Chest or Stomach	45 min	R 764	R 1056
Back, Chest and Stomach	90 min		R 3124

Book and pay for 5 sessions and get the 6th session free. Terms and conditions apply

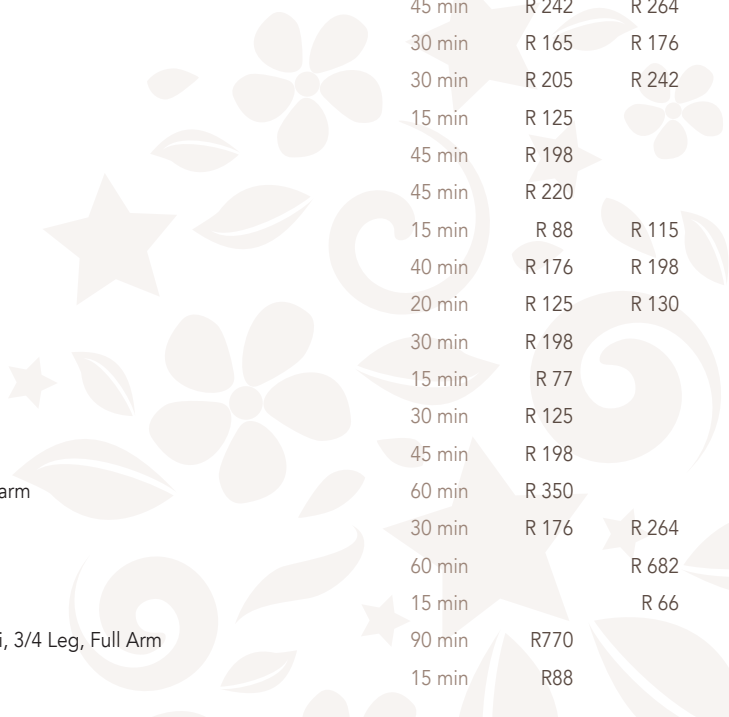


WAXING

TREATMENT	DURATION	LADIES	GENTS
Full Leg	45 min	R 242	R 264
Half Leg	30 min	R 165	R 176
Three Quarter Leg	30 min	R 205	R 242
Bikini	15 min	R 125	
Brazilian	45 min	R 198	
Hollywood	45 min	R 220	
Under Arm	15 min	R 88	R 115
Full Arm	40 min	R 176	R 198
Half Arm	20 min	R 125	R 130
Full Face	30 min	R 198	
Lip, Brow or Chin	15 min	R 77	
Brow and Lip	30 min	R 125	
Brow, Lip and Chin	45 min	R 198	
Half Leg, Bikini and Underarm	60 min	R 350	
Back, Chest or Stomach	30 min	R 176	R 264
Back, Chest and Stomach	60 min		R 682
Ear, Nose or Brows	15 min		R 66
Full Face, Underarm, Bikini, 3/4 Leg, Full Arm	90 min	R770	
Feet & Toes	15 min	R88	



HAIR REMOVAL



CHECK IN POLICY

Please ensure that you are at Kikuti "Place of Beauty" for your pampering at least 5 minutes prior to your scheduled appointment.

CANCELLATION POLICY

When cancelling appointments, we require 24 hours notice as our therapists are scheduled especially for you.

LATE ARRIVALS

Your treatment will be reduced accordingly to accommodate the amount of time available.

COMMUNICATION:

Monthly specials will be published on our Kikuti place of beauty Facebook page and communicated via SMS and Whatsapp.

PAYMENT

All treatments are to be settled with cash or card prior to departure. Tips for the therapists will only be accepted in cash.

GIFT VOUCHERS POLICY

Gift vouchers are available and will be issued with a monetary amount, vouchers are valid for a period of 1 year. Any difference between the Voucher and treatment booked to be settled on departure.

Please Note: Scheduling an appointment with Kikuti "Place of Beauty" is acknowledgement of our terms and conditions.

SALON HOURS

Monday – Friday: 08:00 am – 6:00 pm / Saturday: 08:00 am – 5:00 pm

LOCATION & DIRECTIONS:

The Wilds, Stand 1139 Jagluiperd Street, Leopards Den, Pretoria East

Proceed through gate 1 at the Wilds Estate;
at the first circle turn right, through the boom into Leopards Den;
turn immediately left into Jagluiperd Street;
Kikuti Place of Beauty is on your right after the sharp bend
(Corner of Jagluiperd Street and Tierboskat Street)

OUR RANGE INCLUDES:



epi^omax

Exuviance

EPLFREE

lyco^ogel



Dermapen



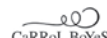
MORGAN TAYLOR
Professional Nail Lounge



XXTRALASH



caribbeantan



TO MAKE AN APPOINTMENT CALL: **082 725 2327**